

Intended use

The above-mentioned consumables for multiple use are used up to maximum 24 hours for the administration of contrast medium (CM) and saline solution (NaCl) in radiological diagnostics of computed tomography, magnetic resonance imaging and X-ray mammography. The consumables must only be used in combination with contrast medium injectors of MEDTRON AG that can build up a maximum pressure of up to 21 bar/305 psi during the application.

The use of the syringes **REF 312426-100** and **312465-100** in combination with the tube system **REF 312400-100** over a maximum period of 24 consecutive hours is only allowed when using a suitable MEDTRON patient line **REF 318415-100** with two green check valves. The patient line must be changed after each patient. The syringes **REF 312426-100** and **312465-100** are used as dosing chambers for contrast medium or saline solution. The liquids are transferred from a reservoir into the syringe using a contrast medium injector and then emptied into the patient for the administration. The tube system, the syringes and the spikes must be changed after a maximum time of 24 consecutive hours.

The tube system **REF 312400-100** is used for liquid transfer of contrast medium and saline solution. It is used for filling syringes of a contrast medium injector from reservoirs and for conducting the liquids into the patient. The application of the tube system with yellow check valve is only valid for patient-related change of the MEDTRON patient line **REF 318415-100** with two green check valves. The tube system, the syringes and the spikes must be changed after a maximum time of 24 consecutive hours.

The patient line **REF 318415-100** is used for liquid transfer of contrast medium and saline solution into the patient. The application of the patient line is only valid for the one-time use on a single patient, i.e. in case of change of patient, the patient line must also be changed. The spikes **REF 314095-100**, **319099-100** and **319099-901** for multiple withdrawal from a reservoir are used for filling syringes from reservoirs. The tube system, the syringes and the spikes must be changed after a maximum time of 24 consecutive hours.

The products are applied by medically educated and trained qualified personnel. Any use beyond this is deemed to be non-intended use. Never use the products for other purposes!

MEDTRON AG guarantees the suitability of the products for the intended use. Other manufacturer-specific requirements must be observed.

Day Safe System

Multiple-use tubing system for injection of contrast and saline in CT and MRI imaging

Instructions for Use for:

- Day Safe Syringes 200ml Art. 312426-100
- Day Safe Syringes 65ml Art. 312465-100
- Day Safe Filling Tube D Art. 312400-100
- SUre Patient lines 150cm Art. 318415-100
- Spike Art. 314095-100, and Mini Spike Art. 319099-100

System components

Validated for 24 hours use when used in combination



24h To be used for max. 24h



Time of beginning of use



Date of use



Information on the contents
of the syringe

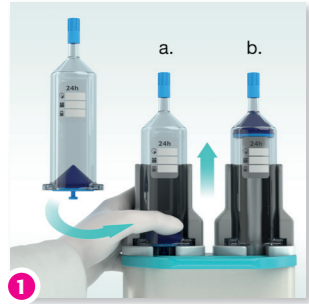
Day Safe System

Multiple-use tubing system for injection of contrast and saline in CT and MRI imaging

Introduction

Read these instructions for use carefully to ensure proper use of the products and safe operation of the injector, and to avoid damage to patients, users and third parties as well as damage to property due to improper use.

Setup of Day Safe System on MEDTRON Injector 1x / 24 h



1 Insert Day Safe syringes
Move plungers up now



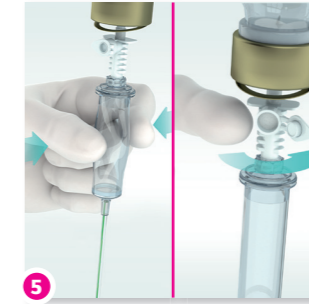
2 Perforate CM and saline containers with spike



3 Connect drip chambers on spike



4 Hang containers in injector's pole



5 Activate drip-chamber and open air entry



6 Connect tubing on syringes

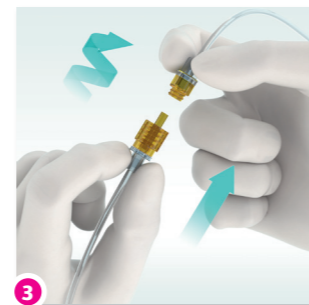
Filling and Venting of Day Safe Filling Tube D and SURE Patient Line ∞ / 24 h



1 Enter filling volume for CM on injector



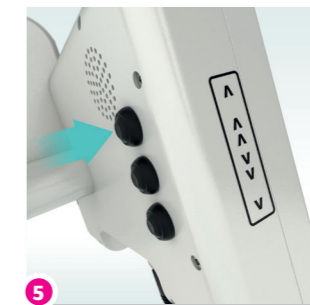
2 Enter filling volume for saline on injector



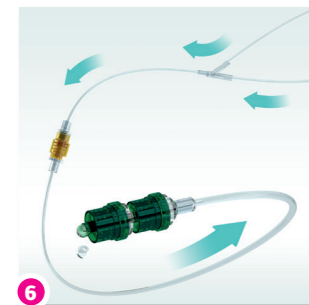
3 Connect SURE patient line to drop-stop connector



4 Vent contrast using manual keys



5 Vent saline using manual keys



6 Vent patient line with chosen liquid

Vial / Soft Bag Exchange 1x / ☺



1 Pierce new container with spike



2 Disconnect drip chamber from empty container

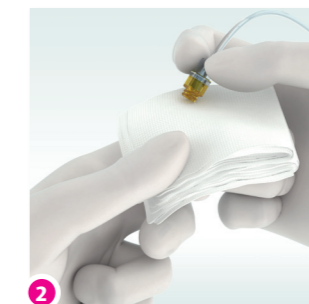


3 Connect the drip chamber to the new spike. Hang up, open air inlet and activate.

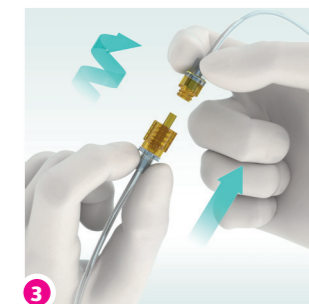
Change SURE Patient Line for each Patient 1x / ☺



1 Disconnect used patient line from drop-stop connector



2 Dab the drop-stop connection



3 Connect and vent the new patient line